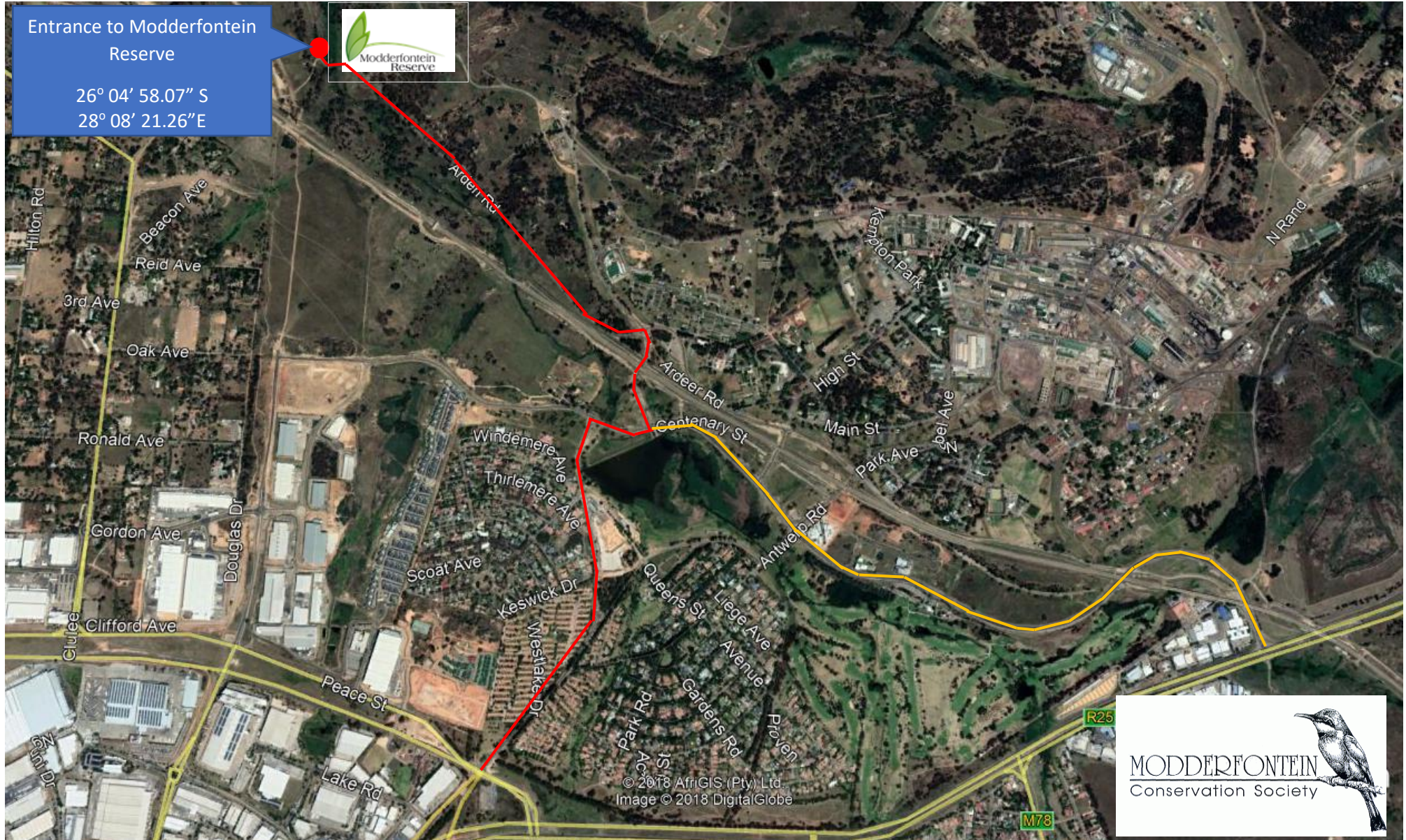


Entrance to Modderfontein Reserve

26° 04' 58.07" S
28° 08' 21.26" E



© 2018 AfrigiS (Pty) Ltd.
Image © 2018 DigitalGlobe



From N3 towards Durban

Take Exit 12, London Road

Continue straight over intersection into Peace Street.

At the third set of traffic lights turn left into Valley Road (follow the red line on the map)

At the traffic circle continue straight into Johannesburg Road

At the three-way stop turn right into Centenary Road

At the next three-way stop turn left

At the four-way stop turn left into Arden Road

Continue on the tar road for about 1.8 km to the entrance to the Modderfontein Reserve

From N3 towards Pretoria

Take Exit 119, R25/Modderfontein Road

At the traffic lights turn right onto the R25

Continue straight over the intersection with Hereford Drive

Take the slip road (Valley Road) to the left (follow the red line on the map)

At the traffic circle continue straight into Johannesburg Road

At the three-way stop turn right into Centenary Road

At the next three-way stop turn left

At the four-way stop turn left into Arden Road

Continue on the tar road for about 1.8 km to the entrance to the Modderfontein Reserve

From Kempton Park

From the R25 towards Johannesburg turn right into Centenary Road (follow the orange line on the map)

Continue over the four-way stop with Antwerp Road

At the second three-way stop turn right

At the first four-way stop turn left into Arden road

Continue on the tar road for about 1.8 km to the entrance to the Modderfontein Reserve